

**who can design brilliant
metallic packaging?**

you can.

Benda-Lutz 
Metallic Effects

working for you.





who can rely on the highest quality, global supplier for metallic effects?

you can.

Finest Pigments and Powders

If you want to reach new levels of quality, you generally need to look deeper. At Sun Chemical, we pay attention to detail, take pride in innovation and have a deep sense of responsibility to the environment. At the same time, we never lose sight of our primary goal: supplying our customers with the best metallic pigments in the world.

Beste Zutaten

Wer in neue Qualitätsdimensionen vordringen will, muss näher an die Dinge herangehen. Wir von Sun Chemical arbeiten mit Liebe zum Detail, Freude an der Innovation und haben ein starkes Verantwortungsgefühl der Umwelt gegenüber. Dabei verlieren wir nie unser oberstes Ziel aus den Augen: unseren Kunden die besten Metallpigmente der Welt zu liefern.

Brilliant Results – Uncompromised Details

Brilliant results are usually the sum of perfect details. Since 1910, Benda-Lutz has been the brand synonymous with the highest quality ingredients for coatings, powder coatings, autoclaved aerated concrete, plastics and printing inks.

Glanzvolle Ergebnisse – kompromisslose Details

Glanzvolle Ergebnisse sind meist die Summe perfekter Details. Seit 1910 steht der Name Benda-Lutz für die besten Zutaten für Lacke, Pulverlacke, Porenbeton, Kunststoffe und Druckfarben.

Our Promise and How We Deliver

We tailor solutions. We nurture ideas. And we bring the latest technology to market. With 100 years of experience, and a depth of resources from which to draw, we have the people, knowledge and products to make any project a success. Every hour of every day, we are working to deliver quality, service and innovation to our clients worldwide.

Unser Versprechen und wie wir arbeiten

Wir liefern maßgeschneiderte Lösungen. Wir hegen und pflegen Ideen. Und wir bringen die neuesten Technologien auf den Markt. Mit der Erfahrung von mehr als 100 Jahren und einer Fülle an Ressourcen haben wir die Mitarbeiter, das Wissen und die Produkte, um jedes Projekt erfolgreich werden zu lassen. Wir arbeiten jede Stunde jeden Tag, um Qualität, Service und Innovation an unsere Kunden abzuliefern.

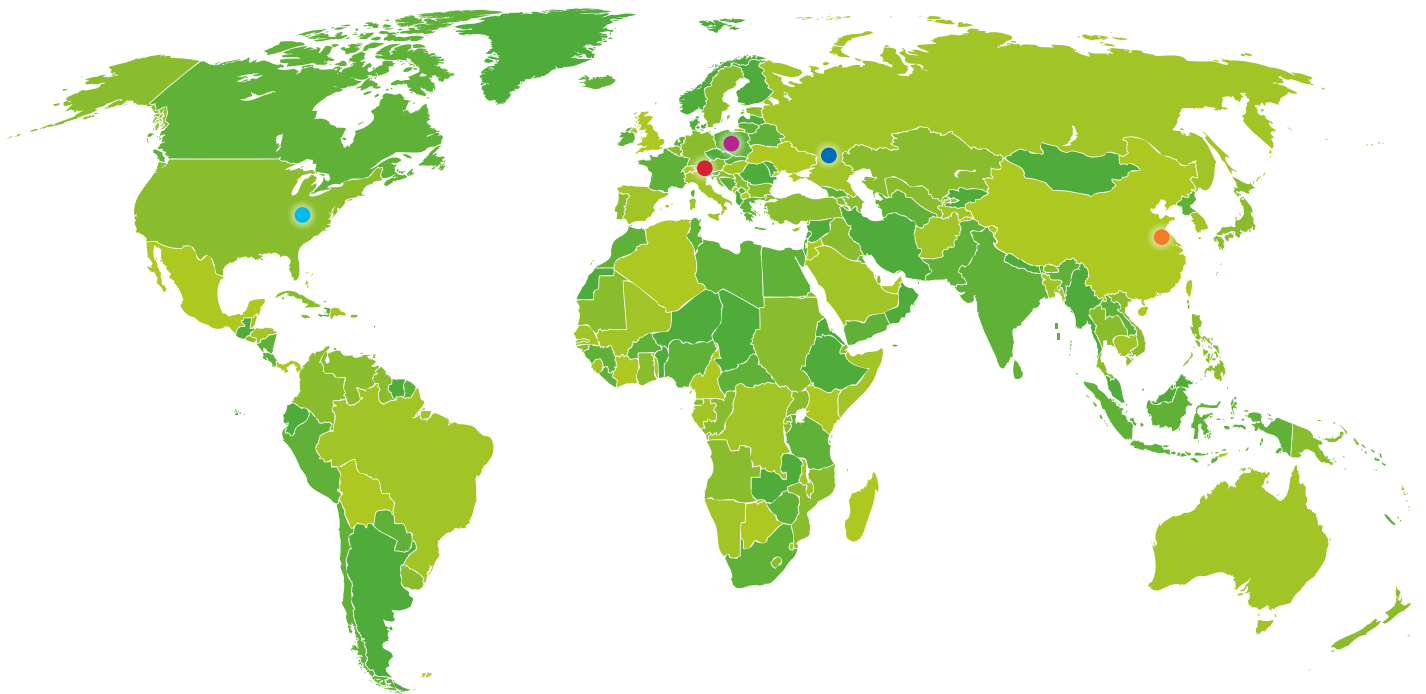
quality

service

innovation



wherever you are in the world, our team will help you to find the right product.



Global Technical Service

Europe, Africa, Asia, Australia

Ferdinand-Lutz Strasse 8,
3134 Nussdorf ob der Traisen – Austria
Phone: +43 (0) 27 83 62 02-0

Americas

5020 Spring Grove Avenue
Cincinnati, OH 45232 – USA
Phone: +1 513 681 5950

- Nussdorf, Austria
- Skawina, Poland
- Volzhsky, Russia
- Independence, USA
- Haiian, China

Benda-Lutz Leafing:

High performance leafing grade aluminium pastes that offer excellent printability with extraordinary metallic brilliance and opacity.

Benda-Lutz Non-Leafing:

Non-leafing aluminium pastes for excellent rub resistance, lamination bond strength and formulation flexibility in straight silvers and polychromatic colors. NCS grades provide improved ink transfer, adhesion, flow, gloss and blocking resistance on a variety of substrates.

Benda-Lutz METALLIC:

Non-leafing aluminium pastes that provide a delicate combination of brilliance, gloss and opacity. Available in standard and NCS versions.

Benda-Lutz MAXAL:

Premium non-leafing aluminium pastes produced via sophisticated milling processes yielding polished flake surfaces with narrow particle size distributions. MAXAL products deliver increased metallic brilliance relative to METALLIC or standard non-leafing grades. Available in standard and NCS versions.

Benda-Lutz COMPAL:

Aluminium pellet preparations for solvent-based (COMPAL D) and water-based (COMPAL WS) flexo and gravure inks. These preparations provide brilliant coloristics and outstanding ink properties in a dust-free delivery form with improved storage stability and non-hazardous transportation.

Benda-Lutz UVAL:

Treated aluminium flakes produced with an innovative stabilization methodology for maximum compatibility with UV printing systems.

Benda-Lutz Leafing:

High Performance Leafing Aluminium Pasten mit exzellenter Verdruckbarkeit, außergewöhnlichem Metallicglanz und guter Deckfähigkeit.

Benda-Lutz Non-Leafing:

Non-Leafing Aluminiumpasten für exzellente Abriebbeständigkeit und Zwischenschichthaftung. Hohe Flexibilität in der Formulierung von Silber- und polychromatischen Farbtönen. Die NCS-Versionen zeichnen sich durch eine Verbesserung in der Farbübertragung, in Haftung, Verlauf, Glanz und Blockstabilität auf einer Vielzahl von Substraten aus.

Benda-Lutz METALLIC:

Non-Leafing Aluminiumpasten bieten eine gute Kombination von Brillanz, Glanz und Deckvermögen. Erhältlich in der Standard- und NCS-Version.

Benda-Lutz MAXAL:

Premium Non-Leafing Aluminiumpasten, hergestellt in einem hochentwickelten Mahlverfahren, resultierend in eine polierte Oberfläche und enge Korngrößenverteilung. MAXAL Typen ermöglichen eine höhere metallische Brillanz im Vergleich zu METALLIC oder Standard Non-Leafing Pasten. Erhältlich in der Standard- und NCS-Version.

Benda-Lutz COMPAL:

Aluminium in Form von Pellets für lösemittelbasierende (COMPAL D) und wässrige (COMPAL WS) Flexo- und Tiefdrucksysteme. Diese nicht staubende Lieferform mit verbesserter Lagerstabilität, ist gemäß der ADR-Einstufung kein Gefahrgut, ermöglicht eine brillante Koloristik mit herausragenden Druckfarbeneigenschaften.

Benda-Lutz UVAL:

Oberflächenbehandeltes Aluminium mit innovativer Stabilisierungstechnologie für maximale Verträglichkeit in UV Druckfarben.

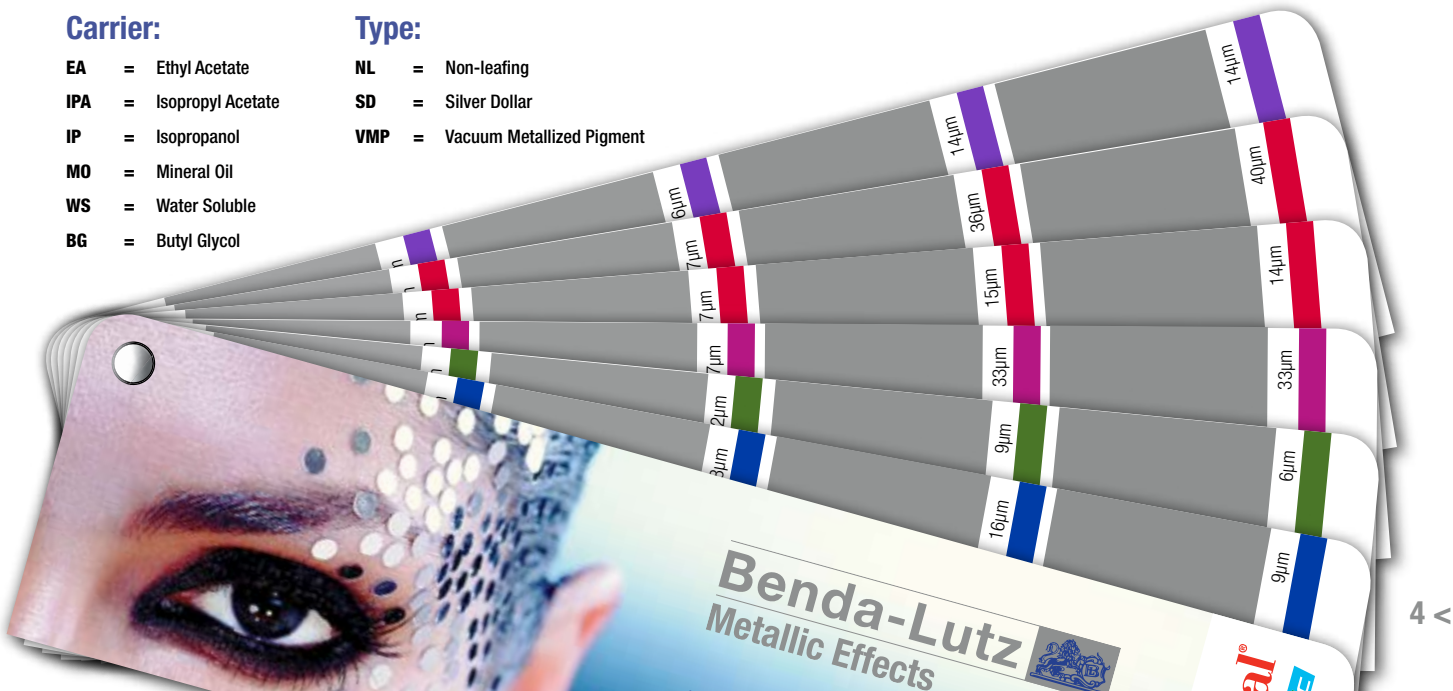
Product Code / Type	Product Characteristics / Produkteigenschaften					Ink System / Tintensystem			
	Form	Type	D50	Metal%	Carrier	Solvent	Water	UV	Offset
Benda-Lutz Leafing									
12082	Paste	Leafing	10	73	EA, IP	X			
1281	Paste	Leafing	9	73	EA, IPA, IP	X			
1291	Paste	Leafing	5	65	MO				X
Benda-Lutz Non-Leafing									
6242	Paste	NL	14	73	EA, IPA	X			
6242/65 NCS	Paste	NL	14	65	IPA	X			
6262	Paste	NL	12	65	EA, IP	X			
6282	Paste	NL	9	65	EA, IP	X			
Benda-Lutz METALLIC									
6854	Paste	NL	19	65	EA	X			
6854 NCS	Paste	NL	19	65	EA	X			
6862	Paste	NL	14	65	EA	X			
Benda-Lutz MAXAL									
64064	Paste	NL SD	15	65	EA	X			
64064 NCS	Paste	NL SD	15	65	EA	X			
64062/72	Paste	NL SD	13	72	IP	X			
64085	Paste	NL SD	9	65	EA	X			
Benda-Lutz COMPAL									
4251 D	Pellet	NL	16	80	Aldehyde	X			
4464 WS	Pellet	NL SD	15	90	WS Binder		X		
4242 D	Pellet	NL	14	80	Aldehyde	X			
4242 WS	Pellet	NL	14	90	WS Binder		X		
4463 D	Pellet	NL SD	14	85	Aldehyde	X			
4474 WS	Pellet	NL SD	11	88	WS Binder		X		
4282 D	Pellet	NL	9	80	Aldehyde	X			
Benda-Lutz UVAL									
12082 UV	Paste	Leafing	10	60	Monomer			X	
12092 UV	Paste	Leafing	5	60	Monomer			X	

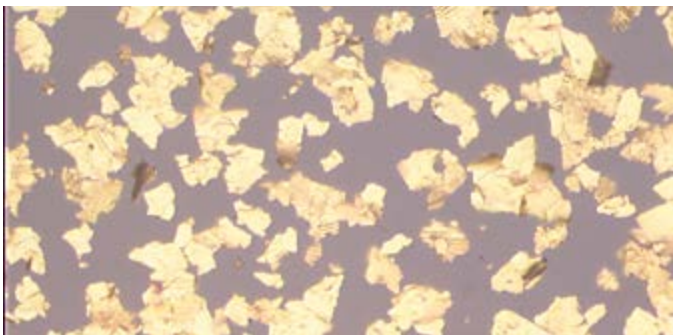
Carrier:

- EA** = Ethyl Acetate
- IPA** = Isopropyl Acetate
- IP** = Isopropanol
- MO** = Mineral Oil
- WS** = Water Soluble
- BG** = Butyl Glycol

Type:

- NL** = Non-leafing
- SD** = Silver Dollar
- VMP** = Vacuum Metallized Pigment





Benda-Lutz SPLENDAL:

Microscopically thin non-leafing aluminium platelet suspensions produced via physical vapor deposition (PVD). This unique manufacturing technology provides perfectly smooth and uniform flakes for the highest level of brilliance and coverage. Effects ranging from brilliant silver-white metallic to dark chrome are available for both solvent-based and water-based inks.

Product Code / Type	Product Characteristics / Produkteigenschaften					Ink System / Tintensystem	
	Form	Type	D50	Metal%	Carrier	Solvent	Water
Benda-Lutz SPLENDAL							
6000	Slurry	NL	12	10	EA/IPA	X	
6001	Slurry	NL	12	10	EA/IPA	X	
6002	Slurry	NL	12	10	EA/IPA	X	
6003	Slurry	NL	12	10	EA/IPA	X	
6600	Slurry	NL	12	10	BG		X
6601	Slurry	NL	12	10	BG		X
6602	Slurry	NL	12	10	BG		X
6603	Slurry	NL	12	10	BG		X

Benda-Lutz SPLENDAL:

Mikroskopisch dünne Suspensionen von Non-Leafing Aluminiumplättchen, hergestellt im PVD-Verfahren. Diese einzigartige Herstellungstechnologie ermöglicht perfekt glatte und gleichmäßige Pigmente für bestmögliche Brillanz und Deckkraft. Effekte von brillantem silber-weiß bis dunklem Chrom sind in lösemittelbasierenden- und wässrigen Druckfarbensystemen erzielbar.

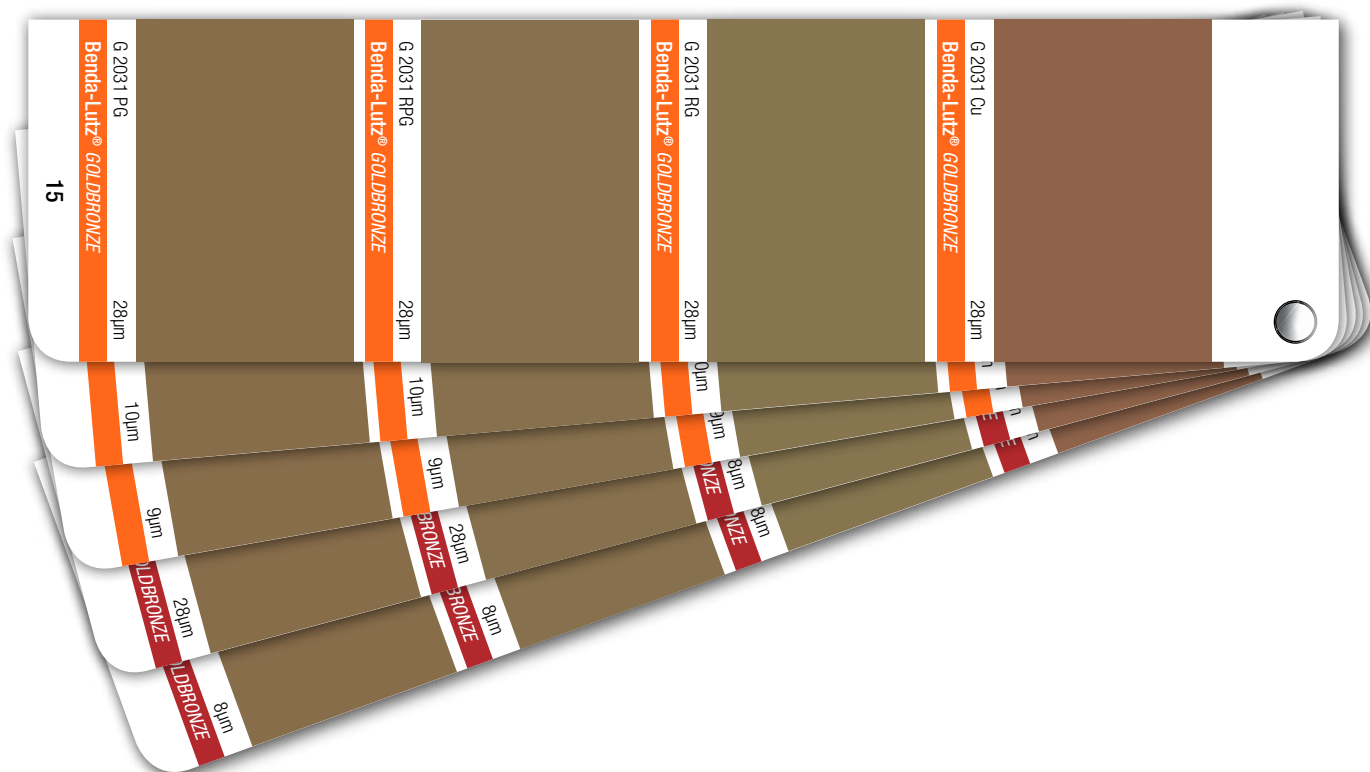
Benda-Lutz GOLDBRONZE:

Premium gold effect pigments made from copper or copper-zinc alloys. These flake pigments are popular for their decorative gold, metallic bronze and copper effects combined with outstanding coverage and printability. Coarse grades are ideal for screen printing and finer grades (G 2071 and G 7778) are designed for flexographic and gravure inks. Stabilized grades provide improved resistance to hot processing.

Benda-Lutz GOLDBRONZE:

Premium Goldeffektpigmente hergestellt aus Kuper-Zink-Legierungen. Diese Pigmente finden Verwendung für dekorative Gold-, metallische Bronze- und Kupfer-Effekte, kombiniert mit hervorragender Deckkraft und Verdruckbarkeit. Größere Typen sind ideal für Siebdruck-Anwendungen, feinere Typen (G 2071 und G 7778) für Flexo- und Tiefdruckfarben. Stabilisierte Pigmente ermöglichen die Anwendung bei höherer Temperatur.

Product Code / Type	Form	D50 µm	Rich Gold / Reichgold	Rich Pale Gold / Reichbleichgold	Pale Gold / Bleichgold	Copper / Kupfer
Benda-Lutz® GOLDBRONZE						
G2031	Powder	28	X	X	X	X
G2041	Powder	16	X	X	X	X
G2051	Powder	10	X	X	X	X
G2071	Powder	9	X	X	X	X
Benda-Lutz® Stabilized GOLDBRONZE						
G7778	Powder	8	X	X	X	X



quality

service

innovation

Sun Chemical - Global Success in a World of Color and Metallic Effects

Sun Chemical Performance Pigments has been in the color and metallic effects business for over 100 years. Our leading-edge technology is unsurpassed as we continue our commitment to solve the color and metallic effects issues of today and develop new solutions for the future. Headquartered in Cincinnati, Ohio, Sun Chemical Performance Pigments is a division of Sun Chemical Corporation.

With annual revenues of more than \$3.5 billion, Sun Chemical Corporation is the world's largest producer of printing inks and pigments. We also are a leading provider of materials and services to the cosmetics, building materials, photovoltaic, packaging, publications, coatings, plastics and other industrial markets. Sun Chemical has a worldwide network of more than 250 locations that provide customers local service with a global perspective.

To learn more about our pigments, contact your local Sun Chemical representative.

working for you.

www.sunchemical.com

Although the information presented here is believed to be reliable, Sun Chemical Corporation makes no representation or guarantee to its accuracy, completeness or reliability of the information. All recommendations and suggestions are made without guarantee, since the conditions of use are beyond our control. There is no implied warranty of merchantability or fitness for purpose of the product or products described herein. In no event shall Sun Chemical Corporation be liable for damages of any nature arising out of the use or reliance upon the information. Sun Chemical Corporation expressly disclaims that the use of any material referenced herein, either alone or in combination with other materials, shall be free of rightful claim of any third party including a claim of infringement. The observance of all legal regulations and patents is the responsibility of the user.

SUNCHEMICAL, BENDA-LUTZ and COMPAL are either registered trademarks or trademarks of Sun Chemical Corporation in the United States and/or other countries. DIC is a trademark of DIC Corporation, registered in the United States and/or other countries. Copyright © 2015 Sun Chemical Corporation. All rights reserved.

Sun Chemical Performance Pigments
General Sales Office USA
International Operations Belgium
Metallic Effects Austria
Sun Chemical México and Latin America
Sun Chemical Brazil

+1 800 543 2323
+32 1023 1500
+43 (0) 2783 6202-0
+52 55 5358 7247
+55 (11) 2462 2500

SunChemical®
a member of the DIC group 

HL 10/15